



Palisades Stewardship
Education Centre
Jasper National Park

Centre des Palissades
pour l'enseignement de la gérance
Parc national Jasper

Program Information



Environmental Stewardship Mountain Recreation Transformative Education



Parcs Parks
Canada Canada

The Palisades Stewardship Education Centre

<http://www.thepalisadescentre.ca/>

The Palisades Stewardship Education Centre is surrounded by the awe-inspiring mountains of Jasper National Park, and is just 15 km east of the town site. We are situated on an historic ranch in beautiful Jasper National Park. Our strength is experiential education, blending mountain recreation with environmental stewardship. Through multi-day nature-immersion programs, youth create memories that last a lifetime.

Vision

Canadian youth will share a passion and appreciation for Canada's National Parks and Historic Sites; through personal connection they will develop a sense of belonging. Youth will move beyond participation towards active ambassadorship.



Palisades Stewardship
Education Centre
Jasper National Park

Centre des Palissades
pour l'enseignement de la gérance
Parc national Jasper

Table of Contents

Background Information	page 4	Signature Components for General Programs	
Facilities	page 5	Survival	page 25
Student Accommodation	page 6	Photography	page 25
Map and Directions	page 8	The Night Sky	page 26
Meals	page 9	Wildlife	page 26
Costs	page 11	Mountain Recreation + Ecology	page 27
Program Overview	page 12	Service Learning	page 27
CTS Credit Courses		Land Art	page 28
CTS Stewardship and Outdoor Skills	page 13	Teamwork and Communication	page 28
CTS Outdoor Survival Skills	page 14	Pond Study	page 29
CTS Leadership Fundamentals I	page 15	Geocaching and Orienteering	page 29
ÉPT Sur la trace des pionniers*	page 16	Skiing at Marmot Basin	page 30
Partnership Sharing/Locally Developed Credit Courses		Jasper Tourism Opportunities	page 30
Water Experience	page 17		
Winter Travel	page 18	Sample Schedule	page 31
Day and Multiday Curricular Programs		Booking Details and Deadlines	page 33
Mountain Peoples (Indigenous)	page 19	Teacher Duties	page 34
Junior High CTF	page 20	Student Expectations	page 35
Junior High Science	page 21	Suggested Packing List	page 35
Grades K-5 Science and Social	page 23	Contact Information	page 36
Grade 6 Forensics	page 24		
Grade 6 Trees and Forests	page 24		
*offered through consultation with Central Nord			



Palisades Stewardship
Education Centre
Jasper National Park

Centre des Palissades
pour l'enseignement de la gérance
Parc national Jasper

Background Information

The Palisades Centre boasts the largest grouping of authentic log structures in Western Canada. All buildings have been modernized and now include technologies such as Smart Boards, wireless Internet and videoconferencing equipment, while still retaining their rustic charm. Three outdoor learning stations allow the majority of programming to be delivered in a natural setting. A wide variety of gear suitable for mountain recreation and exploration is available. Youth stay onsite during their time here in dorm-style accommodation and eat healthy, home-cooked meals in the communal dining hall.

Jasper National Park is one of the crown jewels of Canada's National Park system. The natural beauty of the Rocky Mountains is at our doorstep. While surrounded by glacier capped peaks we paddle across pristine lakes, hike through alpine meadows and climb up rocky crags. Students have the opportunity to observe wildlife, perform fieldwork and be inspired by the best that Canada has to offer.

Middle and high school students from across Canada participate in multi-day and weeklong educational and recreational programs designed to foster an understanding and appreciation of nature and of their National Parks. Classroom courses, fieldwork and mountain recreation are combined to provide an integrated and balanced learning experience. Students experience the ecology and culture of the mountain ecosystem through programs derived from current research and management in the mountain parks.

The Palisades Centre provides enrichment of current curricula, Career and Technology Studies courses and unique locally developed high school credit courses. Recreational opportunities include hiking, mountain biking, canoeing and kayaking with fully qualified instructors. Students discover how nature looks, feels and smells as they are guided by Parks Canada experts. They are exhilarated while experiencing wilderness first hand.

Proud

Partner



Facilities

The Palisades Centre has log cabins with modern amenities. There are seventeen bedrooms in four buildings that can house up to 60 people. Each dorm-style bedroom has from one to seven beds.

There are three meeting rooms as well as three outdoor learning stations and two fire pit areas.

- Wi-Fi, *Smartboards*, and video-conferencing equipment
- Mountain recreation equipment at no additional cost: canoes, kayaks, mountain bikes, snowshoes and x-country skis.



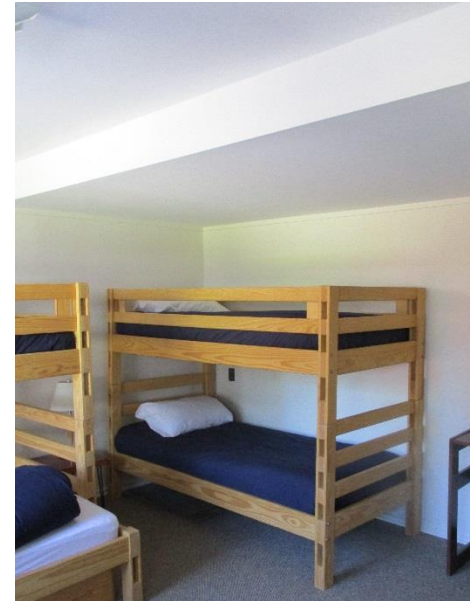
Student Accommodation

We have two modern buildings dedicated to youth groups.

The Den- The Den is our newest building. The building has a gathering space, three washroom areas, and a total of 28 beds.

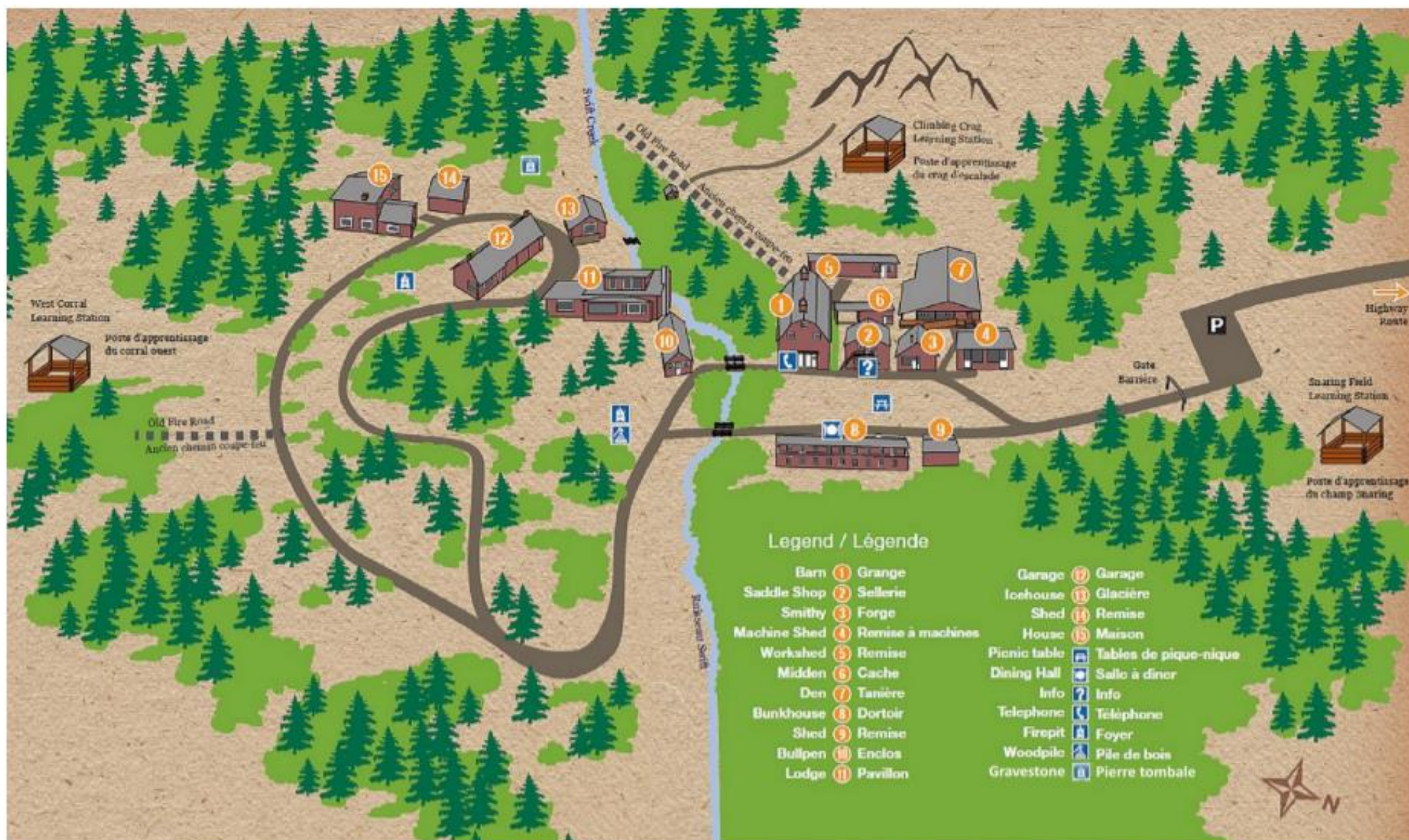


The Barn – This refurbished, historic barn has six cozy bedrooms located around the perimeter of the building. Bedrooms sleep between four and seven people and each bedroom has a bathroom. The Barn has a total of 30 beds.



*Bus drivers and/or additional chaperones may stay in one of our smaller buildings: **“The Smithy”** or **“The Machine Shed”**.





Link to directions: [http://www.thepalisadescentre.ca/documents/general/directions_sitemap-Directions to Palisades.pdf](http://www.thepalisadescentre.ca/documents/general/directions_sitemap-Directions_to_Palisades.pdf)

Meals

Delicious meals are provided buffet style in the **Bunkhouse** Dining Room. The daily package includes three meals at set times.

Sample Menu:

Breakfast:

juices, milk, tea, coffee, cereal, toast, yogurt, pancakes, bacon, eggs, fresh fruit



Lunch

juices, milk, tea, coffee, soup, rolls, fresh vegetable platter, spaghetti, meatballs, sauce, garlic bread, pickles, cheese and cold cuts tray, dessert



Dinner

juices, milk, tea, coffee, salad, fresh vegetable platter, roast beef, mashed potatoes, gravy, cooked vegetables, dessert



* Arrangements for special food requirements (allergies, vegetarian, etc.) may be arranged prior to group arrival. We appreciate two weeks' notice.

*Meals are prepared by a catering contractor – currently Marjorie and her team from *Outland*.

Snacks

Youth spend almost all day and evening outdoors and really look forward to a good evening snack. Daytime and evening snacks are not provided unless added on by request. **It is recommended that teachers bring snacks for their group throughout the week.** There is an area for food storage provided (as no food or snacks are allowed in the bedrooms). Recommended snack items are: bread (jam, cheez whiz, cheese), breakfast cereal/milk, crackers, apples/oranges, hotdogs/buns, marshmallows, makings for s'mores. We have roasting sticks and toaster baskets available. **No nuts and no single use water bottles please!!!**

Cost

- **MULTI DAY TRIP** – (Multi-day programming package rate)- \$94* per student (\$89* GYPSD) (includes one night's accommodation, 3 meals, bedding, towels and two days of programming and all related equipment)
- **DAY PROGRAMMING** - \$5*per student (\$3* GYPSD student) – students can bring a bagged lunch from home (to eat in a classroom or at the fire-pit) or group may have a hot lunch at an additional cost - approximately \$16.
- One free chaperone for every 20 students.
- Please note that minimum group size for meals (including adults) is twelve.
- **CEU revenue** (if applicable) for CTS high school courses goes to the registering school.
- **Locally Developed Courses** (Winter Travel and Water Experience)

Partnership Sharing – students can access Grande Yellowhead Public School Division's Locally Developed Courses (LDC) which have been developed in partnership with Parks Canada. Courses are place specific and engage students in issues unique to Jasper National Park.**Students can attend with their school or independently but students register with The Learning Connection School (GYPSD's outreach school) through the Education Lead. GYPSD pays all costs associated with staying at the Palisades for four days (20 students and 2 teachers). This is a cost recovery model.

*rates based on November 2016 and are subject to change



Program Overview <http://www.thepalisadescentre.ca/Multi-Day%20Programs.php>

- Programming is available in English or French
- Credit courses range between 2-4 days (1-3 credits)
- Programming is delivered by qualified Parks Canada Employees in consultation with the Education Lead/Certified Teacher from Grande Yellowhead Regional School Division- a proud partner. Our instructors are certified Parks Canada professionals who make learning fun and exhilarating.
- Middle and high school students are the primary users of the Palisades Centre. However, we do try to accommodate day programs for elementary school students.
- The Palisades can also be booked for adult groups and out of school youth groups.

Risk Management

The centre has official Risk Management Protocols.

The centre is keen to develop “master agreements” with school divisions. Please contact the Education Liaison to inquire.

These two documents will assist you with completing field trip forms and risk assessments:

<http://www.thepalisadescentre.ca/documents/general/PSEC%20RM%20Protocols%20April%202014.pdf>

<http://www.thepalisadescentre.ca/documents/general/Risk%20Management%20Protocols%20Synopsis.pdf>



High School CTS Credit Courses -

Credit Course - 4 days

CAREER AND TECHNOLOGY (CTS - 3 Credits)

Stewardship and Outdoor Skills

Go behind the scenes in a National Park! Take part in mountain recreation and service learning projects. Learn about environmental conservation in a hands-on way. Get skills to help you be a life-long outdoor enthusiast and steward!



CTS Credits Earned:

- ☐ ENS1010- Introduction to Stewardship
- ☐ WLD 1130 Outdoor Survival Skills
- ☐ ENS1910: ENS Project A

CTS Winter Bundle

What factors affect wildlife populations in Jasper National Park and elsewhere? How do I recognize and learn to use different maps and tools for navigation purposes? Come and answer these questions and many more in our Winter Course Bundle. You will get out on snowshoes or skis (weather permitting) and “get in to the learning”.

Credits Earned:

- ☐ WLD 1010 – Introduction to Wildlife
- ☐ WLD 1060 – Wildlife Navigation
- ☐ WLD 1910 – Project A

Experiential education at the Palisades requires a student and teacher commitment to pre-immersion and post-immersion learning activities. Documents are available in the *documents* section at www.thepalisadescentre.ca

- For all CTS courses, *CEU revenue* (if applicable) goes to the participating school.
- Related Courses: GYPSD Locally developed courses - Stewardship of Protected Lands 25 and 35

Credit Course – CTS – WLD 1130 Outdoor Survival Skills – 1

Credit – 2 days

- ❑ Explore Jasper National Park and acquire the skills and knowledge that will help you have safe, enjoyable outdoor pursuits. Increase your ability to trip plan, navigate, travel and recreate safely in mountain environments. Learn about “leave no trace” principles and how to minimize environmental impact.



- ❑ Experiential education at the Palisades requires a student and teacher commitment to pre-immersion and post-immersion learning activities. Documents are available in the *documents* section at www.thepalisadescentre.ca
- ❑ For all CTS courses, CEU revenue (if applicable) goes to the participating school.

Credit Course – CTS – HSS 1080 Leadership Fundamentals – 1

Credit – 2 days

- ❑ Build your personal leadership skills in Jasper National Park. Participate in a wide range of leadership, recreation, and team-building activities. Plan and execute a service learning project.
- ❑ Perfect for leadership teams, student councils or improving class culture.



- ❑ Experiential education at the Palisades requires a student and teacher commitment to pre-immersion and post-immersion learning activities. Documents are available in the *documents* section at www.thepalisadescentre.ca
- ❑ For all CTS courses, CEU revenue (if applicable) goes to the participating school.

Credit Course

Sur la trace des pionniers (3 crédits ÉPT)

- *un nouveau cours de 3 crédits en français composé d'un amalgame d'activités de terrain en plein-air et imprégné d'histoire et de culture francophone*

Les élèves ayant complétés avec succès ce programme obtiendront 3 crédits ÉPT (études professionnelles et technologiques) :

- ☐ WLD 1010 : Introduction aux études sur la faune et la flore
- ☐ WLD 1060 : Orientation dans la nature
- ☐ WLD 1130 : Habiletés de survie en plein air



- ☐ For all CTS/ ÉPT courses, CEU revenue (if applicable) goes to the participating school.

To access *Sur la trace des pionniers*, please contact *Conseil scolaire Centre-Nord*.

Credit Course Partnership Sharing – LDC

Water Experience 15 – 3 credits – 4 days

Make a splash! Learn to canoe and kayak on beautiful mountain lakes.

This course provides students with the opportunity and background knowledge to safely experience firsthand, the natural water resources they have available to them in their own local communities. It enables students to experience local terrains and explore new opportunities. The objectives of this course are to provide students with a variety of water related experiences, develop an understanding of watershed ecosystems, and enhance leadership skills within a context of critical thinking.

Experiential education at the Palisades requires a student and teacher commitment to pre-immersion and post-immersion learning activities. Documents are available in the “teacher info” section under “programs” on www.thepalisadescentre.ca

Related Courses: Water Experience 25 and 35.

COST for LDC:

Partnership Sharing – students can access Grande Yellowhead Public School Division’s Locally Developed Courses (LDC) which have been developed in partnership with Parks Canada. Courses are place specific and engage students in issues unique to Jasper National Park. Schools wishing to participate in an LDC must obtain permission from Karen Shipka (kareship@gypsd.ca). The teacher will be responsible for contacting the Lead Teacher, Louis Corbeil (louicorb@gypsd.ca) to obtain pre-immersion and evaluation materials. The teacher will also be responsible for all student evaluations on site.



Credit Course Partnership Sharing – LDC

Winter Travel 15 – 3 credits – 4 days

Get outside and play in the snow! Go up to Marmot Basin and learn how to rescue an avalanche victim. Play tag on cross-country skis and have a snowshoe race. Winter really is the coolest season.

Students spend two days at Marmot Basin working with Parks Canada team members, Marmot Ski Patrol and Instructors. Next, students x-country ski and snowshoe in the Athabasca Valley or Maligne Valley. Five major topics are centered on winter travel; Hazard Awareness and Mitigation, Ecological Integrity, Historical Importance, Skill development with Specialist Technology and Equipment, and Appreciation and Value for the Mountain Parks Environment.

Experiential education at the Palisades requires a student and teacher commitment to pre-immersion and post-immersion learning activities. Documents are available in the “teacher info” section under “programs” on www.thepalisadescentre.ca

Related Courses: Winter Travel 25 and 35.

COST for LDC:

Partnership Sharing – students can access Grande Yellowhead Public School Division’s Locally Developed Courses (LDC) which have been developed in partnership with Parks Canada. Courses are place specific and engage students in issues unique to Jasper National Park. **Students register with The Learning Connection School (GYPSD’s outreach school) through the Education Liaison. GYPSD pays all costs associated with staying at the Palisades for four days (20 students and 2 teachers). Transportation assistance through GYPSD may be available.



Day and Multiday Education Programs

Programs can be tailored to ensure that the programming meets your students' needs. For example, programs can be linked to Social Studies, Language Arts, Science and Physical Education at the middle school level. As well, social and emotional learning goals can be accommodated. Programs are aligned with Alberta Education's Inspiring Education document as well as Parks Canada's mandate.

The Parks Canada Palisades Centre is a leader in outdoor experiential education. Our day and multi-day programs provide engaging, hands-on learning for school and youth groups.

Foundational Programs are outlined below:

Teaching of the Mountain People – Grade 7 Social Studies – 2 days

Students will learn about the history of some of the people of the Athabasca Valley, the history of the fur trade as it relates to Jasper House; explore the concept of identity by appreciating how local Indigenous communities relate to land and; understand the mountain environment by considering land-based practices and traditional ecological knowledge.

While many of the stories of the original people have either been lost in time, or changed by interpretation, there are still worldviews and traditional knowledge with us today. In this program, students will explore traditional teachings and view ecological integrity and stewardship through a new lens. Students will explore topics such as: indigenous teachings, games, history, and the tipi. Activities include students laying out their own imaginary homesteads, learning how to lash a travois, discovering the many uses of the sash, assembling their own dovetail cabin, participating in a snow snake competition, making bannock, enjoying an evening of Metis dance, and listening to the teachings of a regional Elder or Knowledge Keeper.

*This module is currently being piloted and refined.



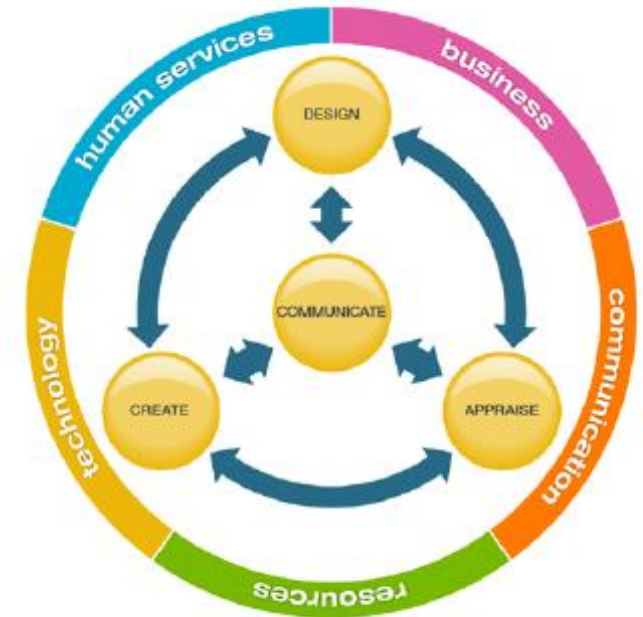
CTF (Career and Technology Foundations) Mini-Challenge - 2.5 days

The course will address two occupational areas:

- *Human Services (Tourism)*
Tourism - Look at the impact of tourism in Alberta and around the world and develop knowledge and skills required for the tourism industry.
- *Resources (Environmental Stewardship and Wildlife)*
Environmental Stewardship– Examine the management and conservation of the environment and propose actions that foster the sustainable development and use of resources.
Wildlife – Examine the human relationship to the natural environment, and consider the impact of various human pursuits on species and ecosystems.



This course will involve:

- Pre-immersion research task - based on a question of interest regarding the tourism industry and stewardship in Jasper National Park
- Immersion at the Palisades (two days) where students learn about stewardship, animals and tourism in Jasper National Park. They will solve a variety of problems. Teams of students will be faced with open ended tasks that challenge students to design, cooperate, communicate, and reflect on their learning.
- Post-Immersion task – students reflect on their learning and design a project to share with their classmates



Junior High Science Learning Experiences

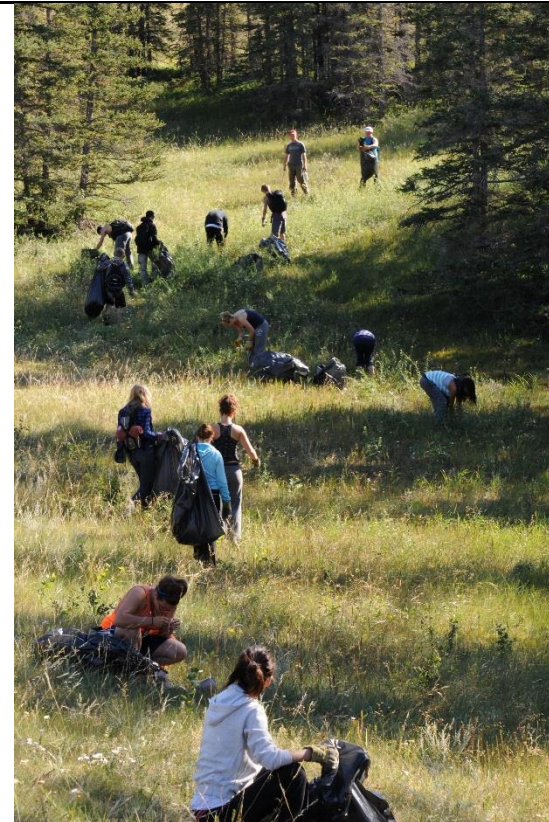
2.5 days each

<p>Grade 7 – Interactions and Ecosystems</p>	<p>Students participate in active learning sessions focused on the intricate relationships and human interaction, between flora and fauna, weather and landscape. Students learn about the how various species live in their ecosystems and how they are impacted by humans and park management. Students discover that there is a complex web of components and interactions as they explore Jasper National Park. Hiking/biking or x-country skiing/snowshoeing, GPS, and games engage students in real world science, connect them with their environment and address physical, geographical and ecological literacies. Citizen Science options available.</p>	
<p>Grade 8 – Winter Water! (Freshwater Systems)</p>	<p>Students participate in hands-on frozen water activities. They visit the Maligne Valley and learn about how glaciers formed the area and how water still impacts the landscape. Students participate in a snow study, and learn about dynamic aquatic populations and human interaction. Students explore the many uses of water, snowshoe and x-country ski on a frozen lake, investigate water quality management issues and learn to value Canada's freshwater.</p>	

**Grade 9 –
Bio-
diversity**

Students engage in citizen science as they explore Jasper National Park and various species in the park. Students specifically focus on two species at risk: Grizzly Bear (Special Concern) and Little Brown Bat (Endangered). Next, students identify and remove non-native species in Jasper National Park. Additional service learning (such as trail maintenance or riparian restoration can be arranged). Key learnings focus on how biodiversity is related to park issues and conservation efforts.

This program includes GPS activities (Space Unit) and may incorporate a *Night Sky* program *weather permitting.



Grades K-5 Day Programs

- Kindergarten – Tune into Nature – Be a Nature Detective!
- Grade 1 – Science – Seasonal Changes, Senses and the Needs of Animals Seasonal Changes
- Grade 2 – Science - Small Crawling and Flying Animals (and Heat)
- Grade 3 - Science - Sound and Hearing AND Animal Life Cycles: BATS
- Grade 4 - Social Studies - The Fur Trade and Jasper House
- Grade 5 – Science - Wetland Ecosystems - Pond study and Related Games and Activities



Grade 6 - Forensic Science - Day Program

Catch a Poacher! During this course, youth work with Parks Canada educators to learn about the investigation skills required for enforcement of the National Parks Act. Working in teams, they will collect and catalogue evidence to solve a crime and make their case.

The morning is spent studying scene management, track casting, blood and hair sampling and DNA profiling. Youth work in small teams following a demonstration and after mastering their forensics field kit. During the afternoon each team is assigned a crime scene to process. Youth apply their newly acquired skills as they collect evidence and build a case against the poacher.



Grade 6 - Trees and Forests - Day Program

If a tree falls in the forest, what happens next? Mountain pine beetle, fire management and tree adaptations are some of the things you'll learn about as you explore the forests of Jasper National Park.

Spend a day at the Palisades Centre. See if you have what it takes to be a forest fire fighter!

Topics include:

- tree identification and adaptation
- forest health
- fire management in a national park
- mountain pine beetle



Multi-Day General Programming - Choose activities from our

Signature Components!

- supplement existing courses such as physical education, outdoor education, CTS, CTF
- focus on cross-curricular competencies
- enhance various literacies: physical literacy, ecological literacy, energy literacy and geographical literacy.

Survival

Are you a survivor? Would you know what to do if you got lost or someone was injured in your group? Discover the six steps to wilderness survival and gain valuable outdoor skills. The Survival Day program at the Palisades Stewardship Education Centre engages students in real life emergency situations.

Students work as a team to problem solve and practice survival skills like making fires, shelter building and wilderness first aid. They also spend time in the woods learning to use navigational tools including maps, compasses and GPS. Suitable for Grades 6-12.



Photography

Use a camera to express yourself and to see the world in new ways. Get up close and personal with nature in Jasper National Park. This hands-on workshop will teach you about digital cameras and how to see like a photographer.

What's the difference between a snapshot and a photograph?

Learn about composition, perspective and lighting. Discover what all those buttons and settings do. Take portraits, close-ups, action shots and more. Share your best shots with your friends and leave with souvenirs of your day. Bring your own camera or borrow one here.



The Night Sky

Contemplate the universe. The world's largest dark sky preserve is in Jasper National Park! In this cosmic two hour program students explore their place among the stars. Use telescopes and computer software at the Palisades Centre to observe the night sky.

Discover our place in the universe. Learn about tools and tips for night sky observation, the planets of our solar system, and star lore. We'll use telescopes and planetarium software celestial objects to identify celestial objects and constellations.

*season and weather dependent



Wildlife

Who lives here? Learn about the charismatic creatures that inhabit Jasper National Park. Through hands-on learning and activities, Parks Canada experts give you the inside scoop on our wilderness neighbours.



Mountain Recreation and Ecology

Explore Jasper National Park and learn about the ecosystems around you. Hike, canoe, kayak, snowshoe, x-country ski or mountain bike with our trained Parks Canada staff. All equipment provided at no extra cost.



Service Learning

The staff at the Palisades can help your group plan for and execute a service learning project such as removal of non-native species, litter removal or trail maintenance in Jasper National Park.



Land Art

Get creative in nature. Learn about what “Land Art” is and then enter the creative process. Be prepared to share your work of art with the rest of your group!



Teamwork and Communication

Engage in cooperative learning and team building activities designed to improve leadership and communication skills. Students will be faced with challenges that promote critical and creative thinking.



Pond Study

Learn about water issues and water quality in Jasper National Park. Investigate macro-invertebrates and water quality indicators such as pH, hardness and turbidity.



Geocaching and Orienteering

Learn how to use a compass, GPS, read a map and navigate safely. Work in groups to tackle orienteering challenges.



Skiing at Marmot Basin- with Marmot Learning Centre Session and a day of Palisades Programming

Many groups take advantage of Marmot Basin's great school rate for lift, rental and lesson (2016/2017 rate is \$63 plus GST with one free chaperone per 10 youth). www.skimarmot.com or contact group sales at 1-866-952-3816

While on the hill, groups enjoy a free session at the Marmot Learning Centre. This is a Parks Canada, Marmot Basin and GYPSD partnership. The Marmot Learning Centre is an on-hill classroom facilitated by Parks Canada Palisades instructors, public safety specialists and ski patrol. Sessions are generally 1/2 to 3 hour long (depending on request) and topics available are: Species at Risk, Avalanche Safety, Winter Work, and Emergency Situations.

<https://www.skimarmot.com/plan-your-trip/groups/marmot-learning-centre>

When organizing your ski trip with Group Sales at Marmot, ensure you mention the Marmot Learning Centre session and you'll receive a further discount! After a great day on the slopes, head back to the Palisades for a great buffet dinner, an hour of evening programming and cozy beds. The next day at the centre will be a full day of programming with outdoor experiences to engage and motivate your students.



Jasper Tourism Connection

While not tied to Palisades programming, many school groups like to book an additional tour with a local operator. Examples include: float trip with Jasper Raft Tours, Flight and hike at the Jasper SkyTram, Icewalk in Maligne Canyon, or a soak in the hot springs at Miette Hot Springs.



General Programming: Sample Schedule

For additional sample schedules, please visit the Documents section of www.thepalisadescentre.ca

Scenario:

A teacher has contacted the education team at the Palisades Centre. He would like to bring 40 students for two nights and three days of programming at the Palisades. The date is booked, arrival times and total participant numbers are confirmed. The academic and social needs are identified by the teacher. The students are in grade 9 and the teacher has taught a Survival unit in ELA. The teacher also teaches these students Science 9. However, the teacher would also like to do one mountain recreation activity and have the students work on some teambuilding and communication. The following schedule is proposed at a cost of \$180 per student (two free chaperones with 40 paid students) :

School X April 29-May 1, 2015

40 students and 2 teachers

Wednesday, April 29th

Time	Activity	Location	Staff
12:00 pm	Arrival, Gear to Rooms, Orientation hunt	Grounds	2 PSEC
12:30	Lunch	Bunkhouse	2 PSEC
1:30	GPS Scavenger Hunt	Grounds	2 PSEC
2:30	Land Art	Grounds	2 PSEC
3:30	Jasper National Park Inside and Out	Garage	2 PSEC
5:00	Dinner	Bunkhouse	
6:00	Survival Fire Building and Shelters	Fire Pit	2 PSEC
8:30	Hand over to teachers	Fire Pit	2 PSEC

Thursday, April 30th

Time	Activity	Location	Staff
8:00	Breakfast	Bunkhouse	
9:00	Group 1 (up to 20 students) On site activities Fire building, shelter building, wilderness survival and first aid scenarios	Palisades	1 PSEC
9:00	Group 2 (up to 20 students) Wildlife in Jasper National Park Species at Risk Wolf Pack Game	Palisades	1 PSEC
11:00	Predator Prey Game	Palisades	
12:00	Lunch	Bunkhouse	
1:00	Afternoon activities : switch from am		3 PSEC 2 PSEC
4:00	Orienteering Course		
5:30	Free time before supper		
6:00	SUPPER	Bunkhouse	
7:00	Team Building games (ie big foot skis, toxic river, raise the flag,)	West Field	3 PSEC
8:00	Handover to teachers/ Fire pit etc.		

Friday, May 1st

Time	Activity	Location	Staff
8:00	Breakfast	Bunkhouse	
9:00	Stewardship Activities -Jasper Inside and Out -Invasive Species Removal (Service Learning)	Palisades Location TBD	2 PSEC
11:00	Depart Palisades		
12:00	Group arrives at Miette Hot Springs for lunch and hot spring soak (additional cost)	-	

*depending on departure time, an optional afternoon of mountain recreation is available at no charge - gentle mountain biking, canoeing Or hiking available (summer), snow shoeing, X-country skiing (winter)

Booking Details and Deadlines:

As soon as possible (dates fill up quickly – especially in Sept., Oct., April, May and June):

- Book a date by calling the Education Team Coordinator at the Palisades
- Discuss the academic and social/emotional goals for your group and what program you envision
- Make a deposit to hold your spot (5%)
- Review the proposed itinerary and finalize programming with the Education Team

One month prior to your field trip:

- work with the Palisades office staff to:
 - finalize participant, chaperone, students and bus driver numbers
 - complete room list
 - note dietary concerns and medical concerns

7 days in advance:

- Provide the final numbers 48 hours in advance to the Palisades office (as per the cancelation policy)

After your field trip:

- Provide feedback to the Education Lead (highlights and challenges)
- Receive and pay invoice from the Palisades office
- Book your next trip!!!

Cancellation Policy

- 5% deposit needed
- cancel 31 days or more in advance - full refund
- cancel within 15-30 days in advance – refund 50% of deposit
- cancel 14 days or less –no refund

Teacher Duties

At the Palisades, teachers/chaperones are responsible for assisting with the supervision of students during activities and for the full supervision of students at meal times. There will be no PSEC staff on site after the evening programming until 8:30 am. Teachers/chaperones are responsible for full supervision of students outside of programming time.

Planning for your group's evening activities is important. PSEC staff can provide your group with a fire and provide equipment such as Bocce Balls and volleyballs. Some group facilitators organize fire-side story-telling, songs, games, skits or reflection activities for the evenings. Snacks are also a great idea! There is an area for snack storage as no food or snacks are allowed in the bedrooms. Recommended snack items are: bread (jam, cheez whiz, cheese), breakfast cereal/milk, crackers, apples/oranges, hotdogs/buns, marshmallows, makings for s'mores. We have roasting sticks and toaster baskets available. No nuts please!!!

Student Expectations

The Three R's

Respect others.

Be kind. Listen to others when they are speaking. Follow directions. Contribute. Include others.

Respect yourself.

Give your best! Eat well. Get enough sleep. Challenge yourself. Dress for the weather. Make friends. Learn new things. Follow protocols for wildlife and personal safety.

Respect the facility and the environment.

Please do not litter. Treat the facility with care. Clean up your eating area. Be tidy in your rooms.

The Palisades Stewardship Education Centre - Overnight Packing List

ALL Season Suggestions:

- ☐ Base Layers (non-cotton)
- ☐ Long underwear
- ☐ Wool or fleece Sweater
- ☐ Warm jacket (down or insulated)
- ☐ Hat, tuque, and gloves
- ☐ Extra wool/synthetic socks
- ☐ Sturdy and appropriate footwear for various outdoor travel
- ☐ Camera
- ☐ Sunglasses
- ☐ Sunscreen
- ☐ Pajamas
- ☐ Toiletries (toothbrush, toothpaste, shampoo, conditioner, deodorant etc.)
- ☐ Field notebook (if applicable)
- ☐ Pencil

NOTE: all bedding and towels are provided!

✓ Groups are encouraged to bring healthy snacks!

- ☐ Snacks (not allowed in room but there is a place for teachers to store group snacks)
- ☐ Water bottle

Please do not bring single use water bottles. It is our belief that these items do not support our Environmental Stewardship message.

In addition.... WINTER Suggestions...

- ☐ Ski pants/ ski jacket
- ☐ Winter boots
- ☐ Ski goggles, helmet, lift pass, ski/board equipment if you have your own (otherwise you it will be rented at the hill if Winter Travel 15)

In addition.... Summer/Spring/Fall Suggestions...

- ☐ shorts
- ☐ running shoes
- ☐ hiking boots
- ☐ rain jacket and pants
- ☐ rubber boots
- ☐ bathing suit (if canoeing)

NOTE: Jasper can have four seasons in one day! It is very important that students have warm clothes regardless of season!

Contact Information

Palisades Office	780-852-6192	palisades.centre@pc.gc.ca
Palisades Education Team	780-852-6192	paul.langevin@pc.gc.ca
Palisades Education Lead	780-852-6202	louis.corbeil@pc.gc.ca

Parks Canada Website:

<http://www.pc.gc.ca/eng/pn-np/ab/jasper/edu/edu5.aspx>

Proud Partner GYPSD (English Only):

www.thepalisadescentre.ca



**Centre des Palissades
pour l'enseignement de la gérance
Parc national Jasper**
parcscanada.gc.ca

**Palisades Stewardship
Education Centre
Jasper National Park**
parkscanada.gc.ca